

MP1584EN

MP1584EN Buck Converter

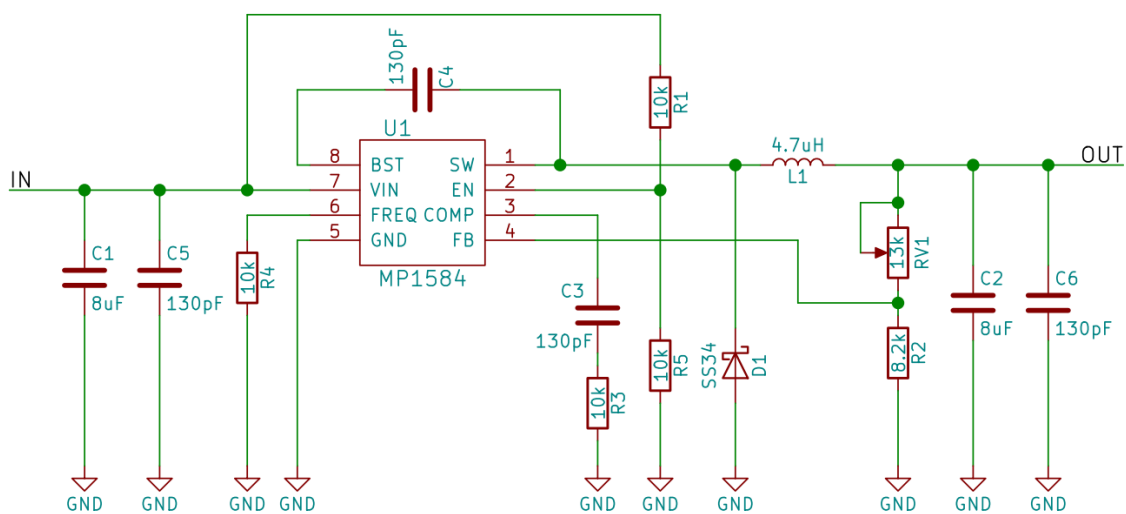
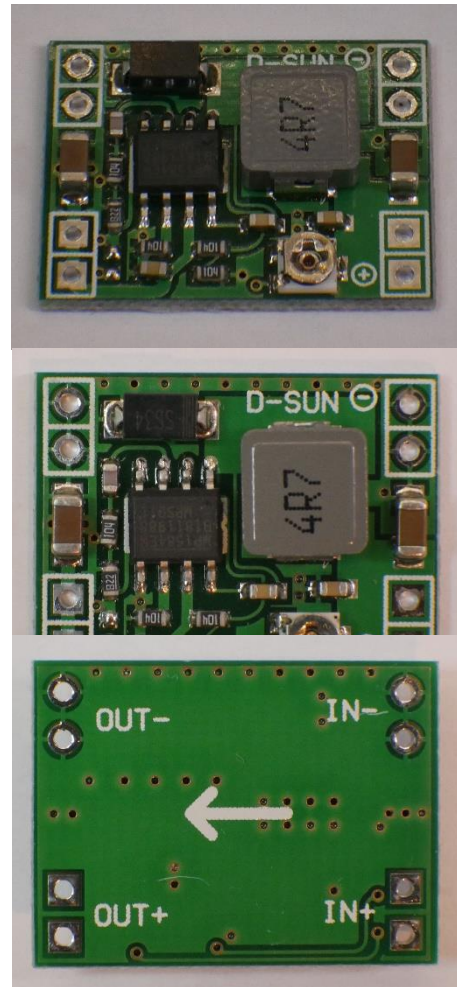
Features

Claimed specification

- Input voltage: 4.5-28V
- Output voltage: 0.8-20V, adjustable
- Size: 22.1mm x 16.8mm x 6mm
- Max. output current: 3A

Additional information

- Starts working at about 4.5 V input
- Very low idle current (0,2 - 1mA)
- Adjusting the voltage is very fiddly
- The output voltage needs to be at least 1V below the input voltage
- MP1584EN buck converter chip
- Thermal vias under the switching the IC

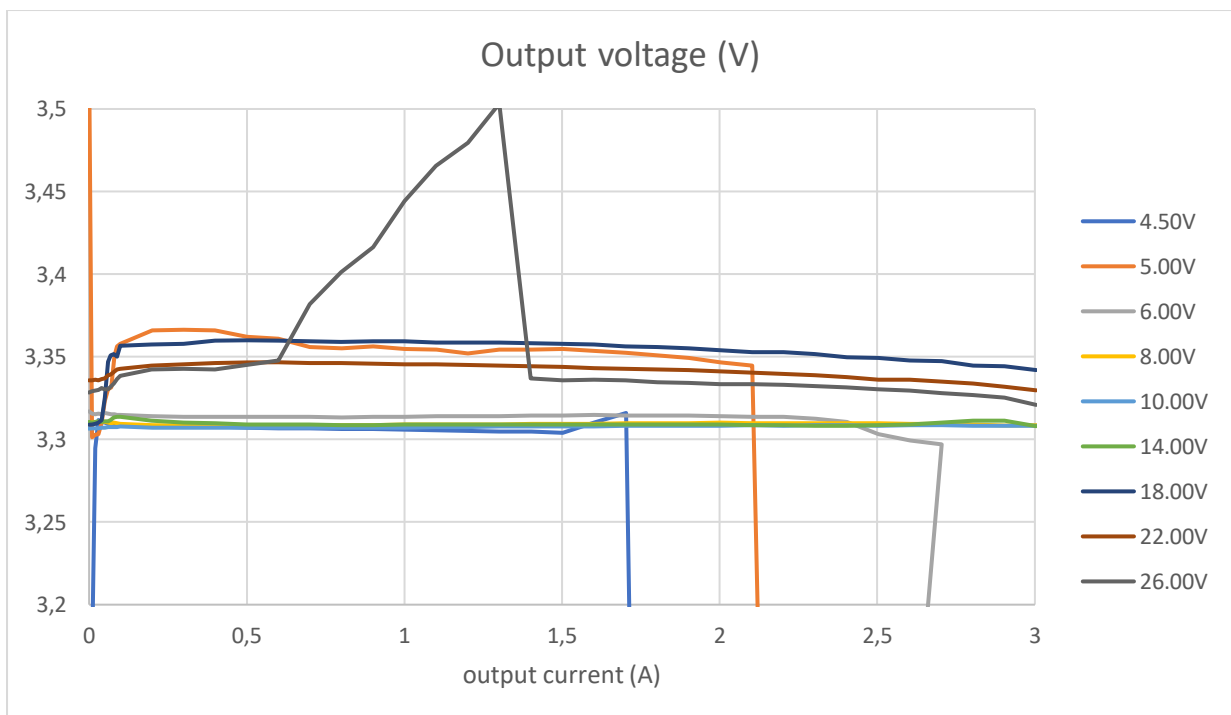
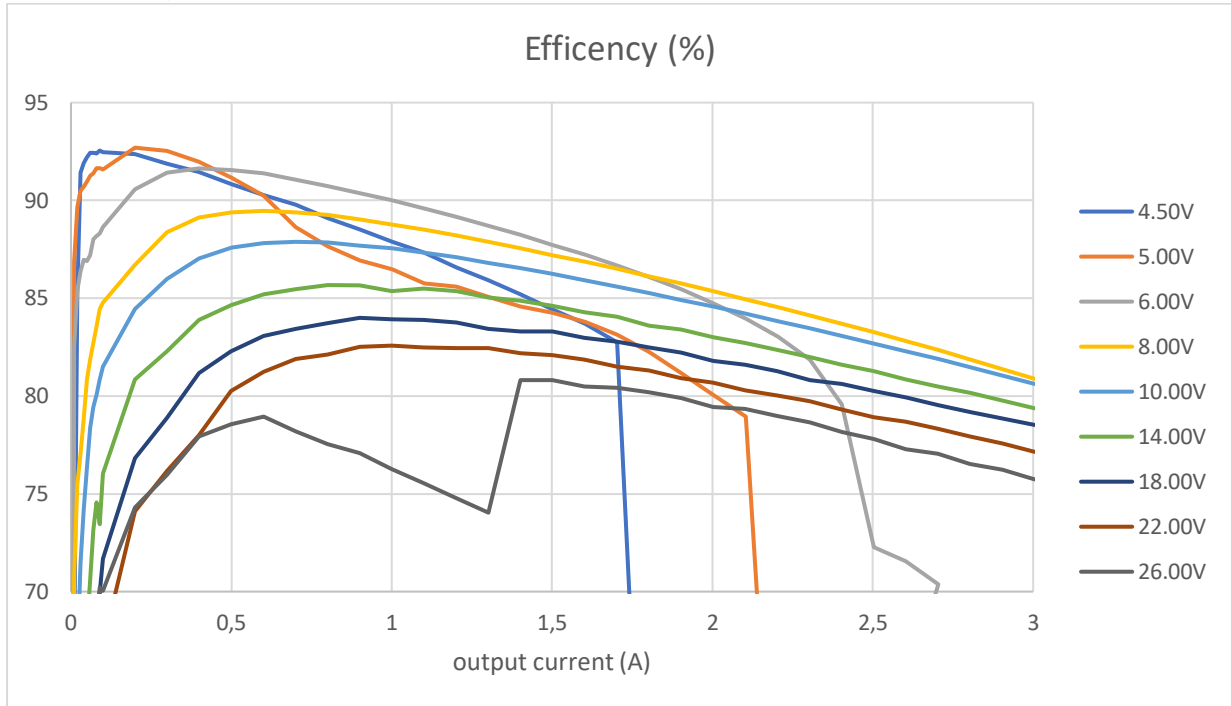


MP1584EN

MP1584EN Buck Converter

Efficiency

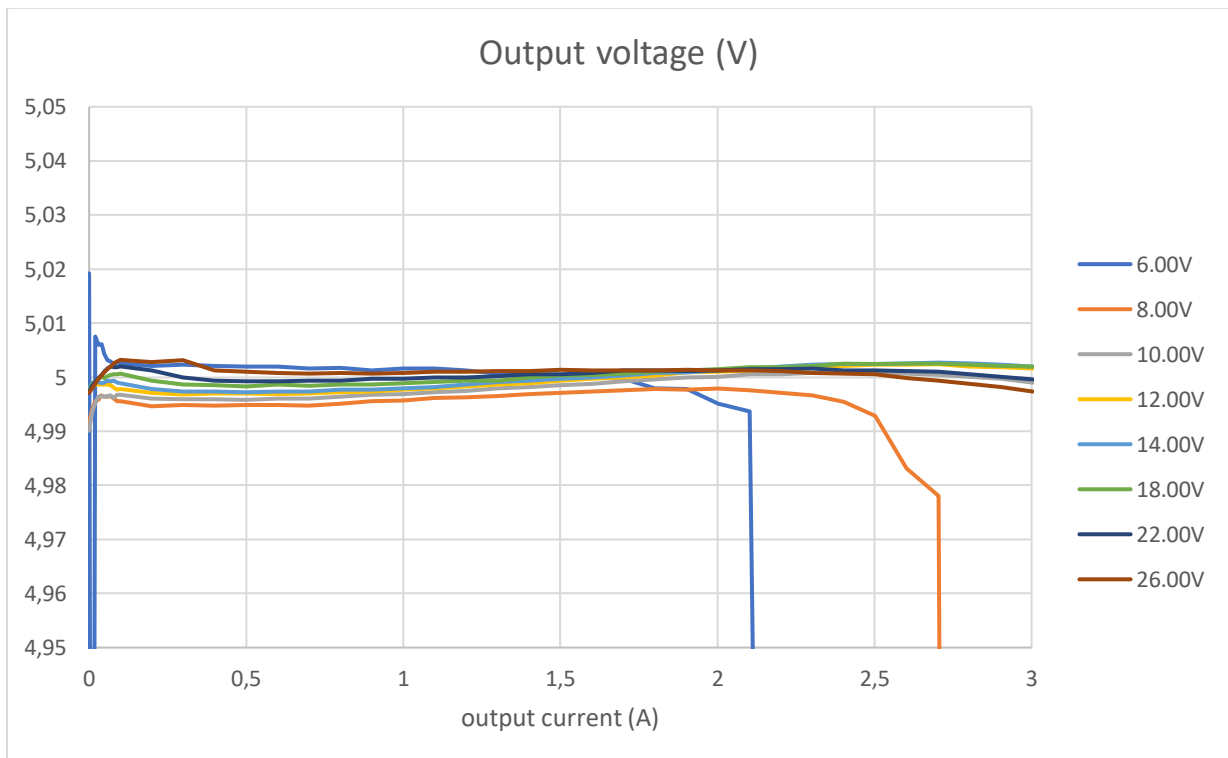
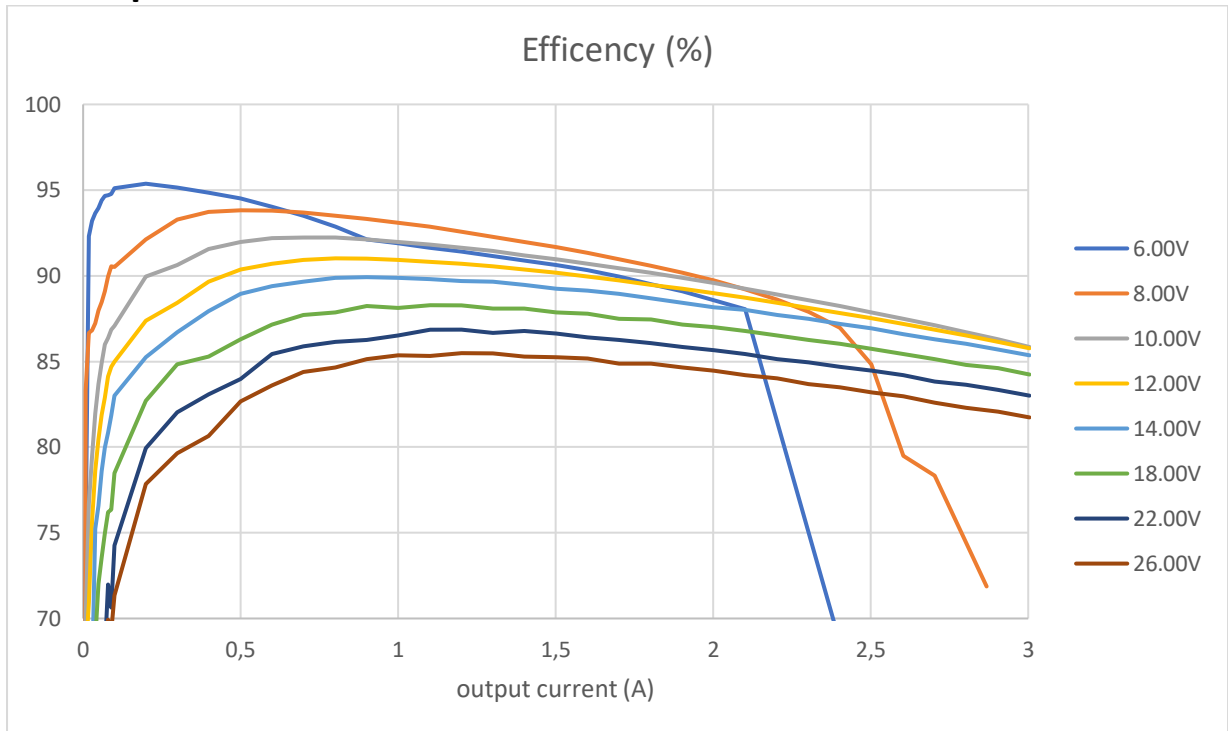
3.3V Output



MP1584EN

MP1584EN Buck Converter

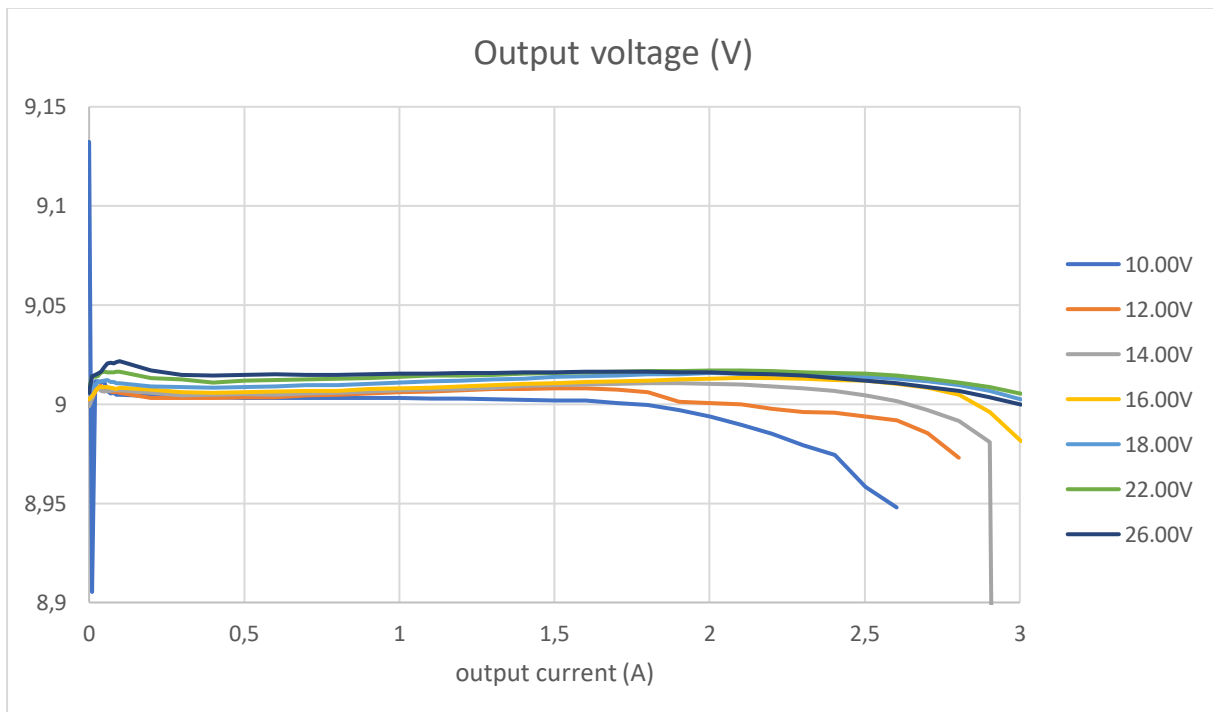
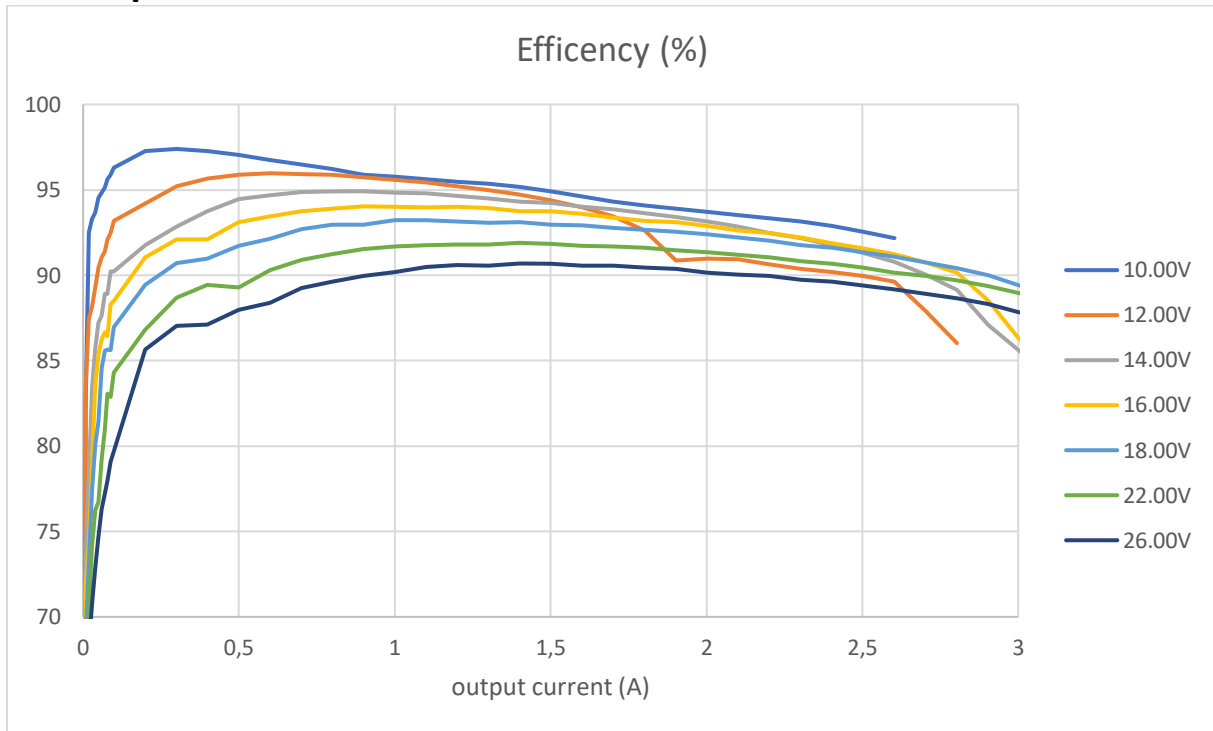
5V Output



MP1584EN

MP1584EN Buck Converter

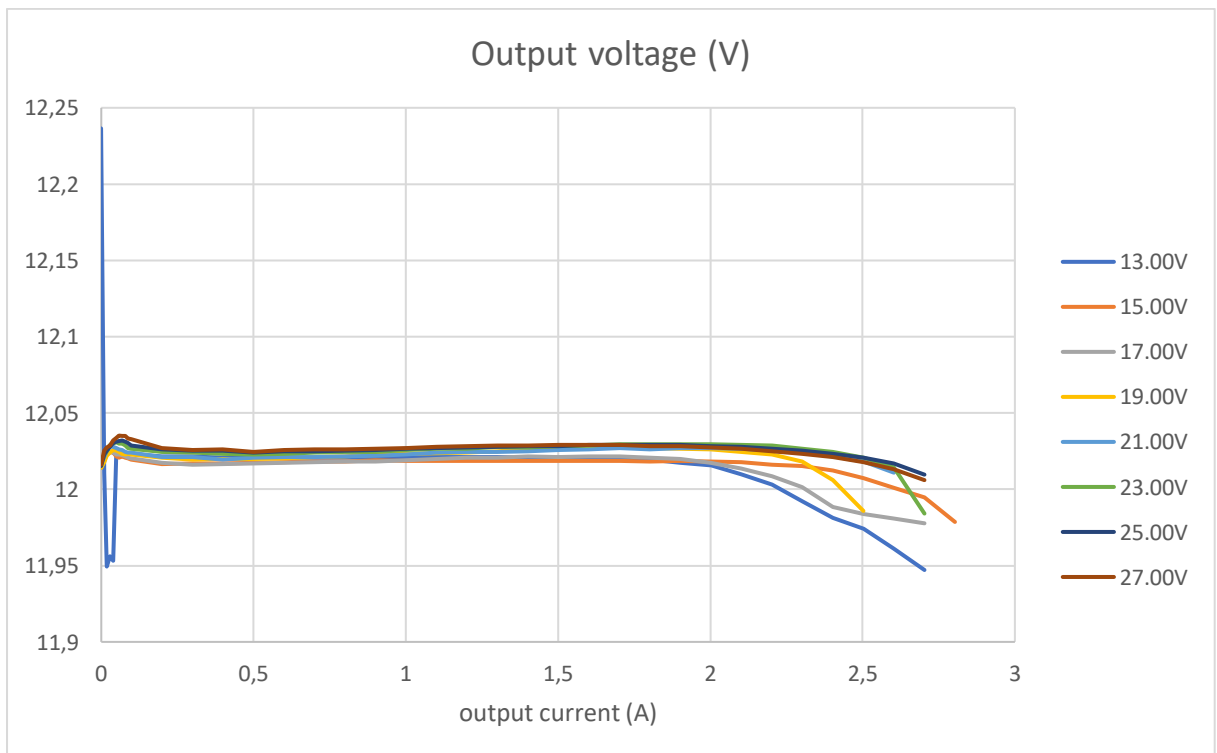
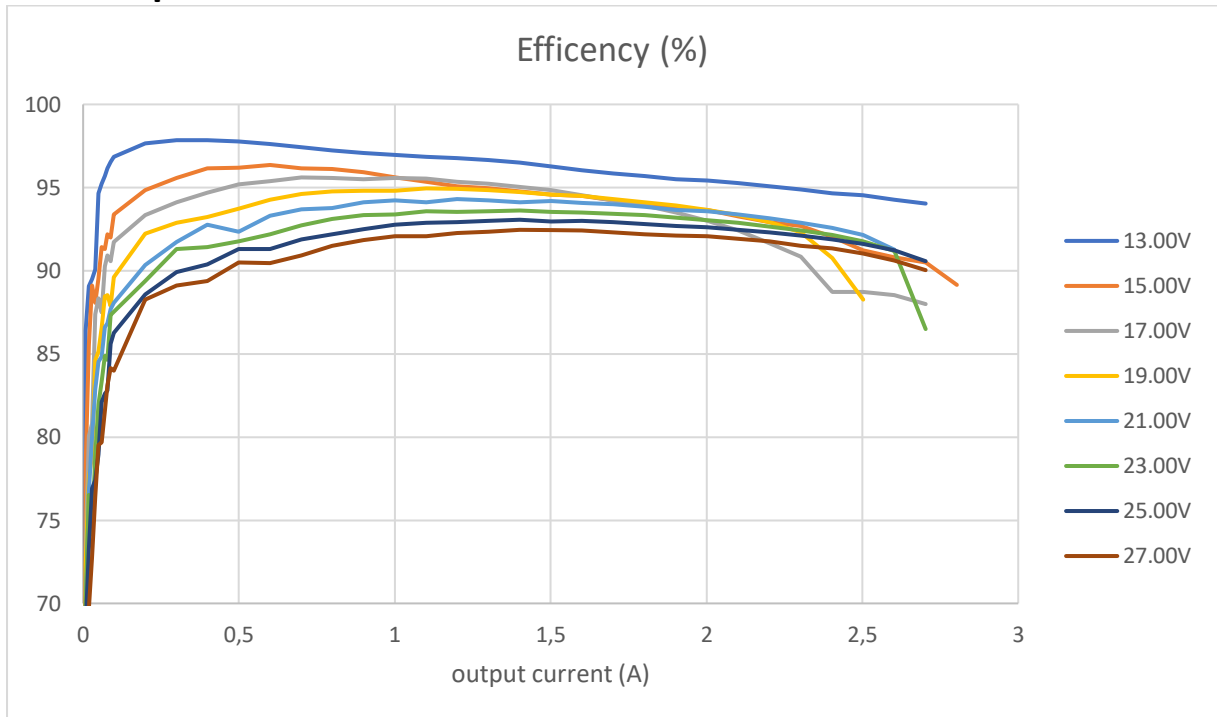
9V Output



MP1584EN

MP1584EN Buck Converter

12V Output



MP1584EN

MP1584EN Buck Converter

15V Output

